



# Making History with a Big Shovel



*Portland Commissioner Nick Fish enjoys handling a backhoe*

How could an area once described as “nothing more than urban industrial blight” transform into the “busiest transit center in Portland”? Part of the answer was evident on Friday, October 21, as public officials, civic leaders and interested citizens converged at the groundbreaking for the new Enginehouse & Rail Heritage Center. Nearly 300 people gathered to celebrate the beginning of construction for the long-awaited permanent home for Portland’s heritage steam locomotives.

It took the Oregon Rail Heritage Foundation (ORHF) over 13 years to reach a critical mass of interest, commitment and money to break ground. Thanks to recent generous support from new grantors and new donors, great press coverage and growing relationships with partners, there’s a new buzz about the project.

In early summer of 2011 the SP&S 700, one of the locomotives, was featured in a large print ad in the *Sunday Oregonian* for the Oregon Cultural Trust. Six media stories have tracked our progress since last spring. The Oregon Museum of Science and Industry (OMSI) and ORHF have started collaborating on marketing and future program ideas. Instead of asking what ORHF is, now people approach those involved in the project with, “When does construction start?” or “When will the Enginehouse open?”

Consultants Shiels Oblatz Johnsen, architects at Hennebery Eddy and construction contractor Lorentz Bruun Company worked hard to navigate permits for a complicated project that didn’t fit into usual categories.

*(Continued on page 2)*

---

*“I cannot tell you how proud and honored I am to be part of this momentous civic undertaking. Today you are going to hear from some of those civic leaders and unselfish volunteers who are directly responsible for why we are here today.”*

*- Nick Fish, City Commissioner*

---

# Message from the President

*Dear Friend of Rail Heritage,*

*I was honored to sit near my long-time friend Gordon Zimmerman at the groundbreaking ceremony for ORHF's new facility. Our most generous and enthusiastic donor celebrated with us all at this great event. His commitment to this project, early and impressive, inspired many others to help us reach our goal.*

*We are all proud that Portland is America's only city that owns three impressive steam locomotives. Building the Enginehouse and Rail Heritage Center will provide a place for their restoration and maintenance, and public access previously unavailable. The Center will be a living workroom to celebrate the history of rail and be a focal point for the rail industry hub surrounding OMSI. Light rail, streetcars, short line and mainline railroads surround the site.*

*Many people—like you—have stepped forward to support our All Aboard capital campaign to move and save these community treasures. Two years ago we set out to raise \$4.7 million, the projected cost of the project at that time. The October Groundbreaking declared that we had raised enough to begin*

*construction. But we still need to pay off our loan for the property itself, nearly \$1 million.*

*We must save the past for future generations. Steam drove the 19th and 20th centuries and its momentum still has a lot to teach us in the 21st century. Our children and grandchildren can learn this story and nothing brings this to life like steam locomotives.*

*In order to ensure the long-term financial success of the Enginehouse & Rail Heritage Center, we need your continued support. The fact that on November 1 we actually started construction of this facility is a major milestone in ORHF's journey. "All Aboard!!"*

*Sincerely,*

*Doyle McCormack  
ORHF Board President*

*P.S. Your donation in 2011 will be matched by a \$500,000 grant from the Murdock Foundation.*



*Gordon Zimmerman accepting applause at groundbreaking*

---

*(Continued from page 1)*

Both TriMet and the City went the extra mile. In July the Portland City Council approved a measure to refinance the property loan repayments over a five-year period until July 2016. TriMet has also been a very proactive partner in resolving issues associated with relocating ORHF to the permanent site.

OMSI embraced ORHF as a good neighbor, recognizing the synergy of a combined commitment to share our excitement and wonder about science—whether about how the human respiratory system or how a steam boiler works.

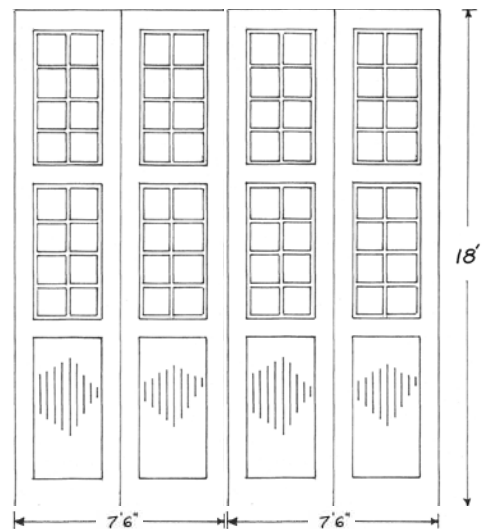
# Roundhouse Icons Continue Their Legacy in New Enginehouse

ORHF wants to preserve the spirit of the Brooklyn roundhouse in the new Enginehouse. Among the most striking features are three pairs of wood doors. Each pair is 18 feet tall and 15 feet wide and weighs

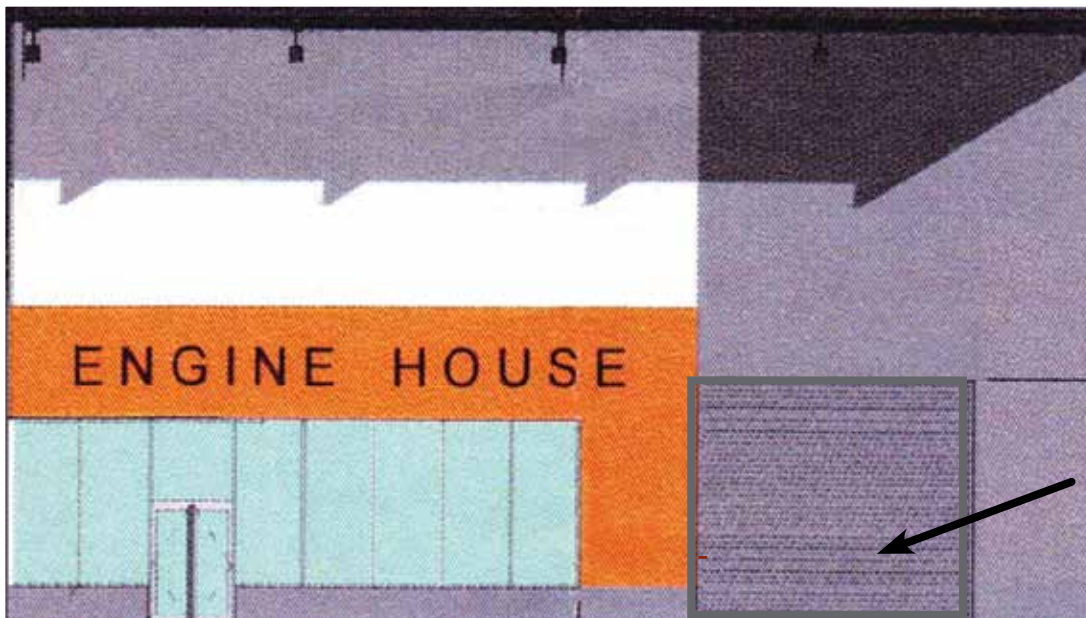
over 1,500 pounds. The pair in the best condition will be restored and two new doors will duplicate the craftsmanship of the originals. One pair will be on the south elevation and two on the north.



*Existing roundhouse doors*



*New doors*



*South facade, new door location*

# BELLS & WHISTLES

There were many special moments at the Groundbreaking on Friday, October 21. But few made a bigger impact than when the assembled dignitaries, donors, interested parties, locomotive crews, and ORHF volunteers blew their wooden whistles. Here's how Bill Failing, our Capital Campaign manager, described the scene:

"Those whistles took over, and we did not miss a beat as our crowd filled their lungs to capacity. Nick (Fish) and Mike (Lindberg) were ebullient about the energy, spirit, and good feelings that this generated....full of civic vigor!"

All the train whistles found permanent homes.

ORHF  
President Doyle  
McCormack  
honors Shields  
Obletz Johnsen  
Project Manager  
Kim Knox for  
her outstanding  
work on  
ORHF's behalf



Custom-made cookies for the occasion



From left: Doyle McCormack, Gordon Zimmerman, TriMet General Manager Neil McFarlane & Union Pacific's Brock Nelson



Two young guests learn how steam engines work from ORHF volunteers in Physics and History classes

---

*"We can now begin to witness the first steps of a major project, graced by a beautiful connecting bridge, binding together the city for Portland citizens and visitors alike."*

*– Mike Lindberg*

---

# S FILLED THE AIR



The event was held underneath the new Martin Luther King, Jr., Viaduct at the southeast boundary of the ORHF property. Beyond the podium the audience looked out to where the Enginehouse will be located, with a backdrop of the downtown skyline and the West Hills.



*ORHF Board, Project Management Group and Pacific Railroad Preservation Association member John Frazee capturing the event*



*Learn more about how from OMSI's Educator Perry Craig Reed*



*Brock Nelson, Public Affairs Director, UP Western Region*



*Former City Commissioner Mike Lindberg toots his whistle*



*OMSI President Nancy Stueber speaking about the synergy between ORHF and OMSI*

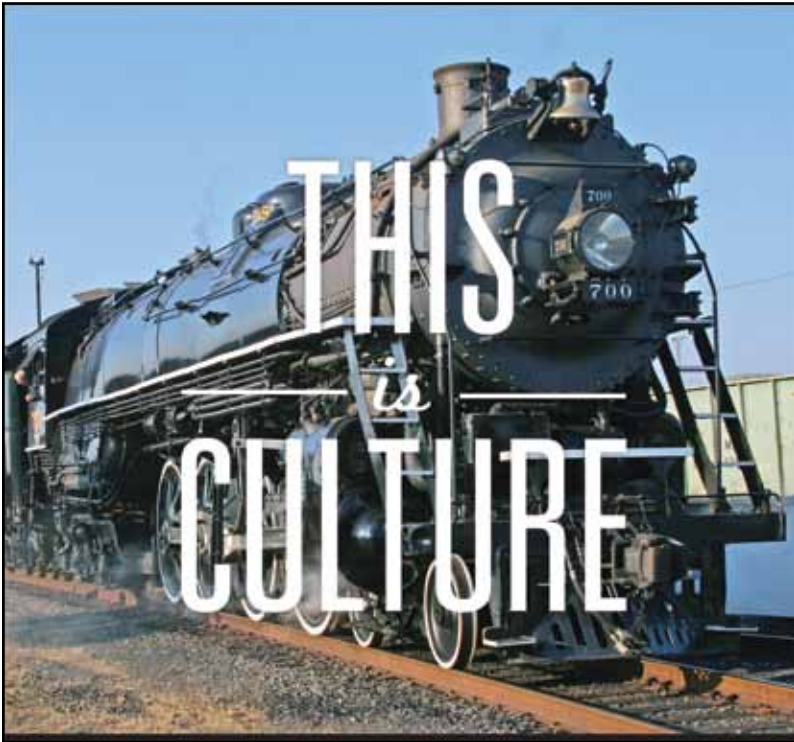
*...or historical attraction, served by an ultimate transportation hub, together enough critical mass to make this an entirely desirable site for all alike to enjoy going into the future."*

*...ndberg, City Commissioner Emeritus & Honorary Capital Campaign Chair*

# ALL ABOARD!

## Portland's Heritage Steam Engines

*Save the past for future generations*



*Courtesy of the Oregon Cultural Trust*

Railroads help define the culture of Oregon. The Rail Heritage Center features the Oregon Railway & Navigation 197, the Spokane, Portland & Seattle 700 and the Southern Pacific 4449. These machines were the engines that fueled the economy to make Portland what it is today.

Your support will keep Portland's three historic locomotives working at the new Enginehouse near OMSI. After living for years out of public view in the Brooklyn Roundhouse, finally these magnificent specimens of the Golden Age of Rail will have a permanent home that makes them accessible for all to see, touch and feel.

This working Enginehouse will provide a living workroom for generations of students to learn and understand about Watt's steam engine, levers, gears, hydraulics, and more. Visitors will see history come alive.

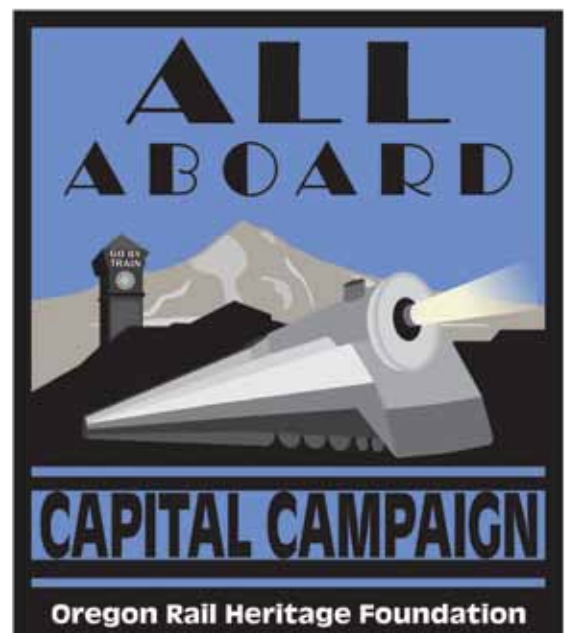
### Join Oregon's Rail Heritage Now

It's easy and affordable to pick the right level for you. We took the numbers of the locomotives to come up with five giving levels. Your gift will bring a special thank you premium available only to Capital Campaign donors. *All Aboard!*

### Here's your chance to celebrate the past, preserve it for the future, and be part of it forever

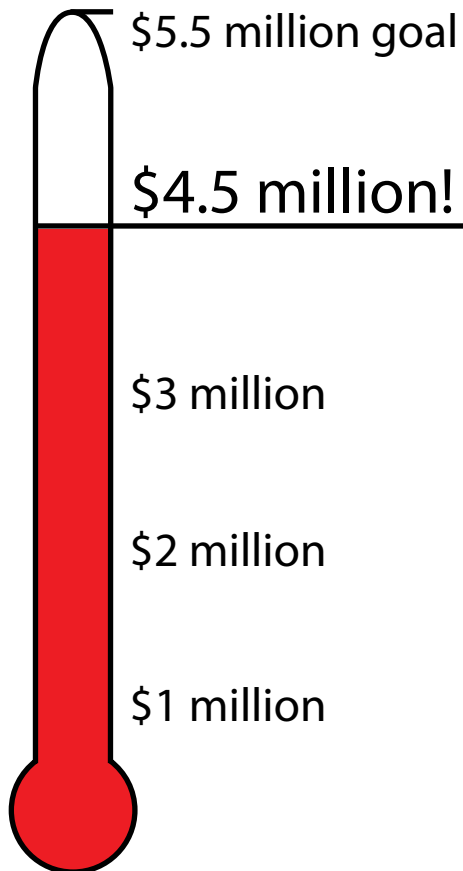
Engineer	\$700.00	<i>All Aboard Jacket &amp; above</i>
Fireman	\$444.90	<i>All Aboard Polo Shirt</i>
Conductor	\$197.00	<i>All Aboard T-Shirt</i>
Switchman	\$ 70.00	<i>All Aboard Hat</i>
Brakeman	\$ 44.49	<i>All Aboard Mug</i>

*Fill out the remit envelope to make your donation.*



*Your contribution in 2011 will be matched by a generous contribution from the M. J. Murdock Charitable Trust to complete this important project.*

When the capital campaign started in June 2009, ORHF faced a difficult decision. Should money be split between paying back the loan and building the Enginehouse, or dedicated solely to the Enginehouse? With the urgent deadline to vacate the Brooklyn roundhouse by January 2012, the ORHF board chose to concentrate its funding on the Enginehouse. The campaign will continue in order to pay back our mortgage.



To date, foundations and individual donors have contributed over \$4.5 million toward the construction tab, leaving \$1 million still to find. The final \$1 million will allow ORHF to repay a \$1 million loan from the City of Portland.

## Thank You Major Capital Campaign Donors

### *Foundations*

- \$ 500,000 *M.J. Murdock Charitable Trust*
- \$ 50,000 *Collins Foundation*
- \$ 50,000 *Swindells Charitable Trust*
- \$ 30,000 *BNSF Foundation*
- \$ 30,000 *Oregon Cultural Trust*
- \$ 25,000 *Candelaria Fund*
- \$ 25,000 *Lamb Baldwin Foundation*
- \$ 7,500 *Jackson Foundation*
- \$ 5,000 *Rose E. Tucker Charitable Trust*
- \$ 5,000 *Union Pacific Foundation*

### *Corporations*

- \$ 286,000 *Oregon Rail Heritage Foundation*
- \$ 22,000 *NW Natural*
- \$ 7,500 *Fred Meyer*
- \$ 5,000 *Friends of the 4449*
- \$ 5,000 *Key Bank*

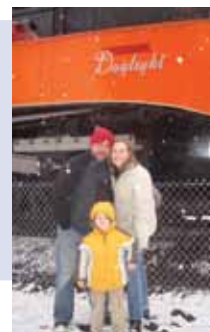
### *Individuals*

- \$1,000,000 *Gordon Zimmerman*
- \$ 50,000 *Rick Michaelson*
- \$ 25,000 *Richard and Caroline Tower*
- \$ 10,000 *Darcy Marentette*
- \$ 6,000 *John Russell and Mary Fellows*
- \$ 6,000 *Fred Gullette*
- \$ 5,000 *Walt Weyler*
- \$ 5,000 *Bill Dickey*
- \$ 5,000 *Al Jubitz*
- \$ 5,000 *Tom Steeves*

### *In-Kind Donations*

- \$ 200,000 *Oregon Rail Heritage Foundation*
- \$ 175,000 *BNSF*
- \$ 50,000 *Lorentz Bruun Co.*
- \$ 20,000 *Hennebery Eddy Architects*
- \$ 20,000 *Shiels Oblatz Johnsen*
- \$ 5,000 *Friends of SP 4449 Inc.*

# What's Next?



## Train Schedule

Day/Date	Morning Trains			Afternoon Trains			Evening Trains		
<b>Fri Dec 2</b>	-	-	-	2 pm	3 pm	4 pm	6 pm	7 pm	8 pm
<b>Sat Dec 3</b>	10 am	11 am	12 pm	2 pm	3 pm	4 pm	6 pm	7 pm	8 pm
<b>Sun Dec 4</b>	10 am	11 am	12 pm	2 pm	3 pm	4 pm	6 pm	7 pm	8 pm
<b>Fri Dec 9</b>	-	-	-	2 pm	3 pm	4 pm	6 pm	7 pm	8 pm
<b>Sat Dec 10</b>	10 am	11 am	12 pm	2 pm	3 pm	4 pm	6 pm	7 pm	8 pm
<b>Sun Dec 11</b>	10 am	11 am	12 pm	2 pm	3 pm	4 pm	6 pm	7 pm	<b>8 pm</b>

*Please arrive at least 30 minutes before boarding*

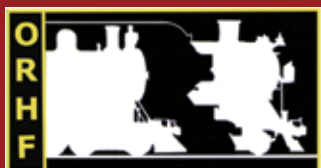
## Tickets

Adults	\$17
Youth	\$11
FamilyPak	\$47 (2 Adults & 2 Youths)
Groups	\$14 (per person for 15 or more)

Children 2 years & younger are FREE.

**For Tickets or more details go to [www.orhf.org](http://www.orhf.org) or  
Call TicketsWest at 503-224-8499**

- ➡ Check us out on Facebook, Twitter and LinkedIn.
- ➡ Spread the word with family & friends to help save the locomotives. Email us at [AllAboard@ohrf.org](mailto:AllAboard@ohrf.org) to learn how you can help.
- ➡ Donate online at [www.orhf.org](http://www.orhf.org).
- ➡ Get exciting updates about the construction progress and more by signing up for All Aboard email blasts at [www.orhf.org](http://www.orhf.org).



**Oregon Rail Heritage Foundation**

**PO Box 42443**

**Portland, Oregon 97242**

**[orhf.org](http://orhf.org)**

The Oregon Rail Heritage Foundation is a non-profit, all-volunteer 501(c)3 organization. Our mission is to secure a permanent home for the City of Portland's steam locomotives and establish a Railroad and Industrial Heritage Museum.